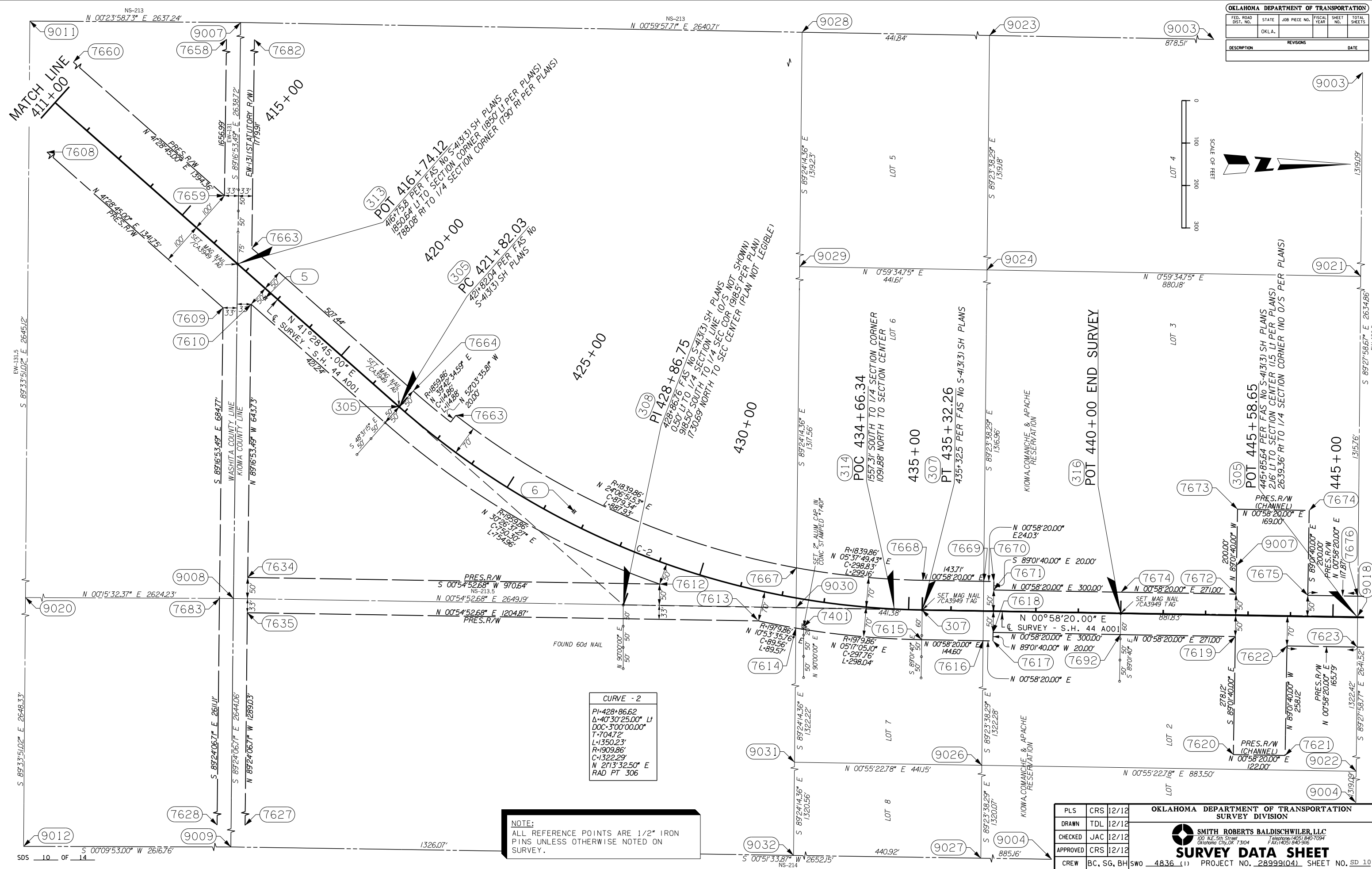
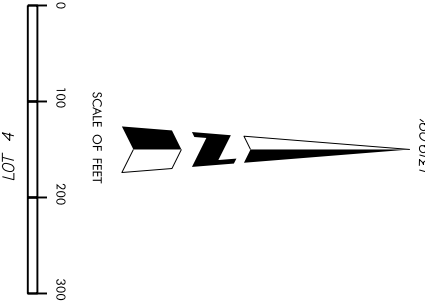


OKLAHOMA DEPARTMENT OF TRANSPORTATION					
FED. ROAD DIST. NO.	STATE	JOB PRCE NO.	FISCAL YEAR	SHEET NO.	TOTAL SHEETS
	OKLA.				
DESCRIPTION			REVISIONS		
			DATE		



CURVE - 2	
PI-428+86.62	
Δ-40°30'25.00" LI	
DOC-3'00'00.00"	
T-704.72'	
L-1350.23'	
R-1909.86'	
C-1322.29'	
N 2°13'32.50" E	
RAD PT 306	

NOTE:
ALL REFERENCE POINTS ARE 1/2" IRON PINS UNLESS OTHERWISE NOTED ON SURVEY.

PLS	CRS	12/12
DRAWN	TDL	12/12
CHECKED	JAC	12/12
APPROVED	CRS	12/12
CREW	BC, SG, BH	

OKLAHOMA DEPARTMENT OF TRANSPORTATION
SURVEY DIVISION

SMITH ROBERTS BALDISCHWILER, LLC
100 N.E. 5th Street
Oklahoma City, OK 73104
Telephone: (405) 840-7094
Fax: (405) 840-9116

SURVEY DATA SHEET

PROJECT NO. 28999(04) SHEET NO. SD 10